

ClearGuide Roadways Training Metro

May 11, 2026



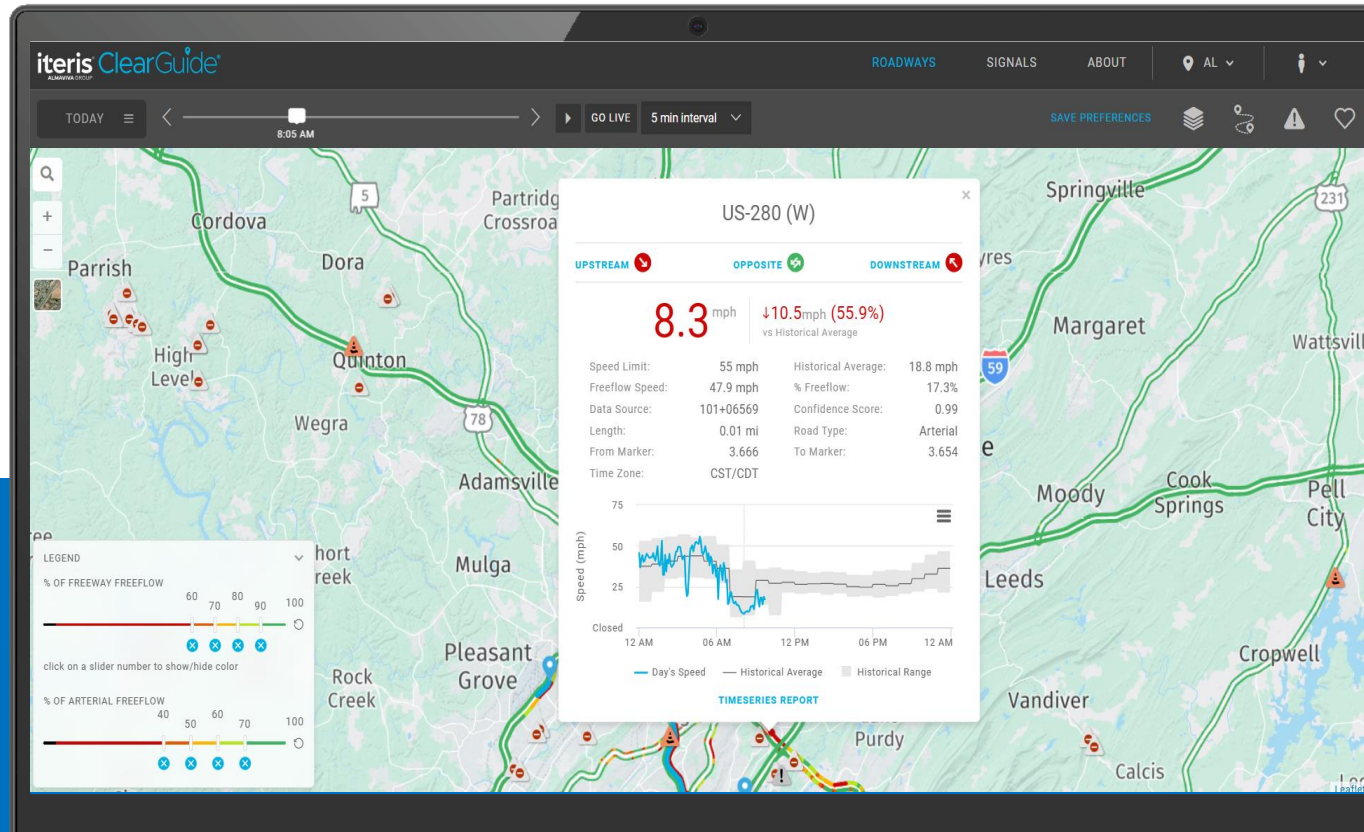
Agenda

- Introductions (Iteris Team)
- Measure Up Overview
- Poll Questions
- ClearGuide Overview & Training
- Final Poll Questions
- Contact & Support



Measure Up! Program

- Evaluates the performance of major arterials and provides origin-destination analysis throughout LA County, to provide agencies and stakeholders with a detailed, reliable assessment of service on each part of the network, and to establish a baseline for evaluation of various arterial improvements and investments
- The Measure Up! Program is comprised of several performance metric resources available for use:
 - LOCUS
 - Dashboards containing origin-destination trip visualizations for 2017, 2019-2025
 - Now migrating to a web-based platform (2021 data onwards)
 - ClearGuide
 - An arterial and freeway performance measurement tool to assess travel performance within Los Angeles County with map, route, and data available in real-time and historically (2018 onwards)
 - Workbooks & Report
 - Excel workbooks and PDF reports of travel performance for major arterials within the subregions
 - Additional historical speed data available from Measure Up! From 2014-2018

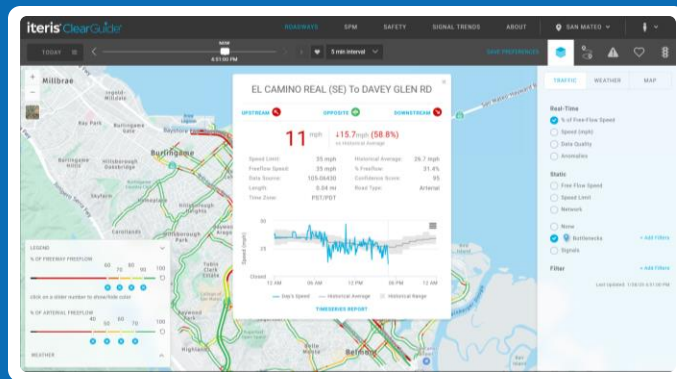


ClearGuide®

Iteris's comprehensive transportation analytics platform that integrates advanced analytics, real-time data, and powerful visualization tools to assist in optimizing traffic flow and improving road safety.

ClearGuide™ - A Single Pane of Glass

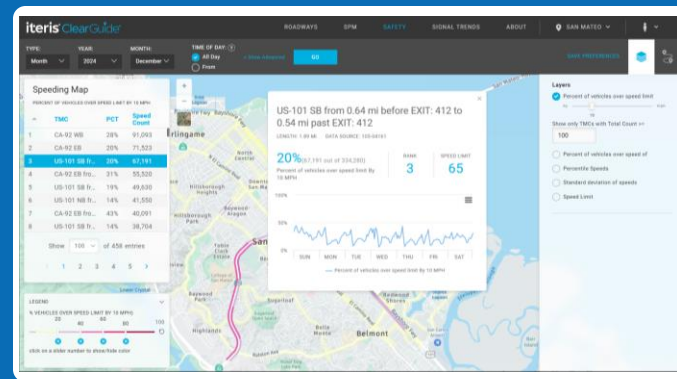
ClearGuide® Roadways



CORE PROBE-BASED DATA SETS

Travel Time & Speeds

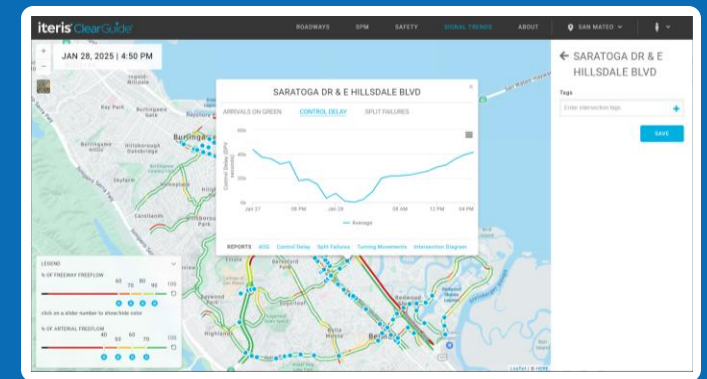
ClearGuide® Safety



CORE PROBE-BASED DATA SETS

Speeding Patterns

ClearGuide® Signal Trends

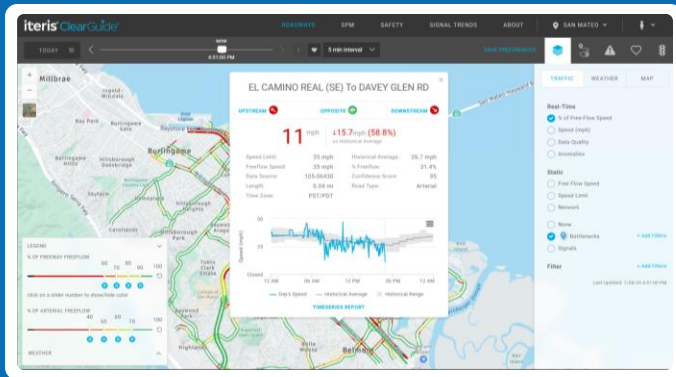


CORE PROBE-BASED DATA SETS

Signal Performance

ClearGuide™ - A Single Pane of Glass

ClearGuide® Roadways



CORE PROBE-BASED DATA SETS

Travel Time & Speeds

ClearGuide® Safety



CORE PROBE-BASED DATA SETS

Speeding Patterns

ClearGuide® Signal Trends



CORE PROBE-BASED DATA SETS

Signal Performance

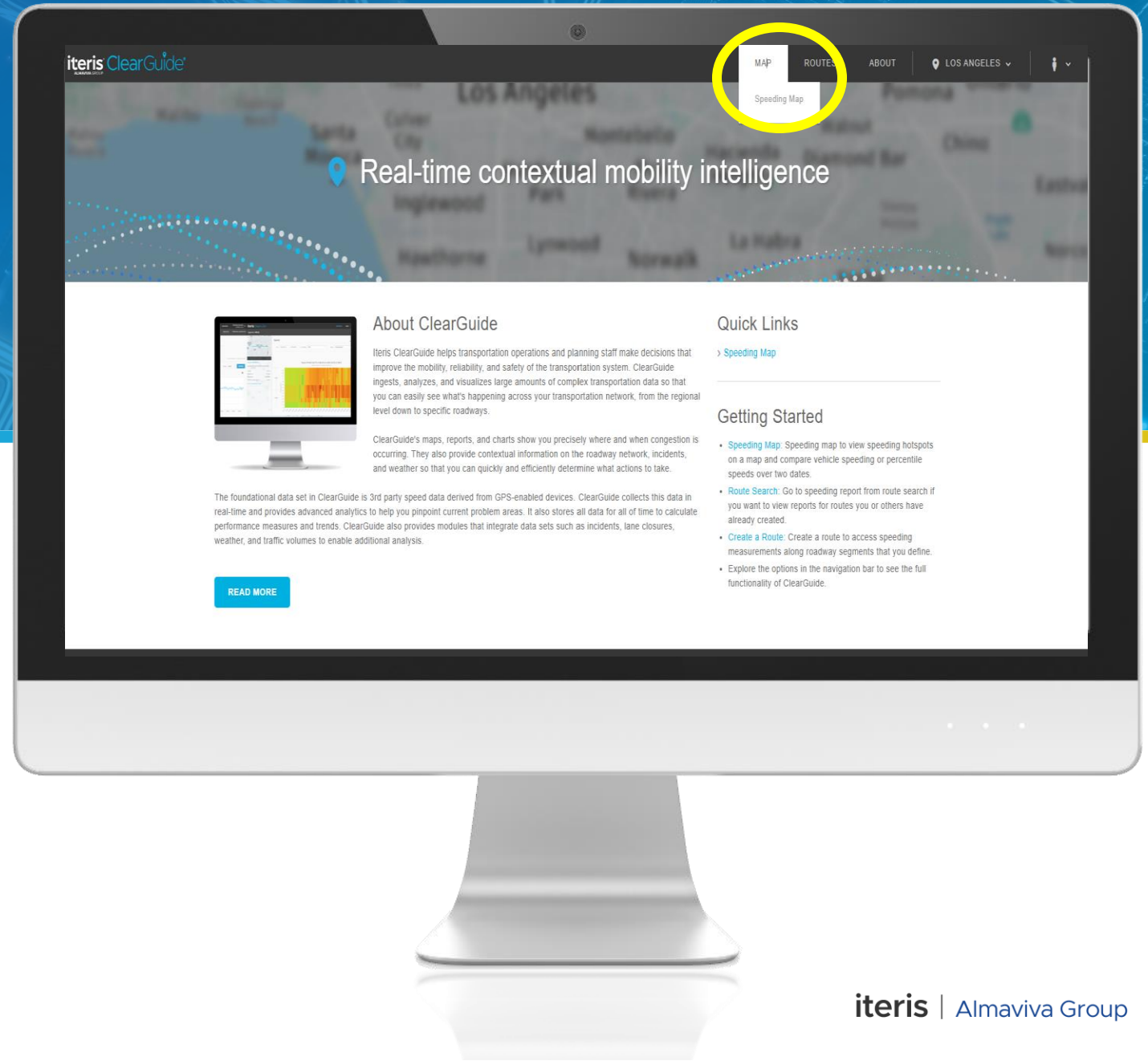


Insights

Real-time Problem Areas
Historical Reporting
Bottlenecks & Incidents
Travel Times & Delays
Trends & Patterns
Route-based Alerts

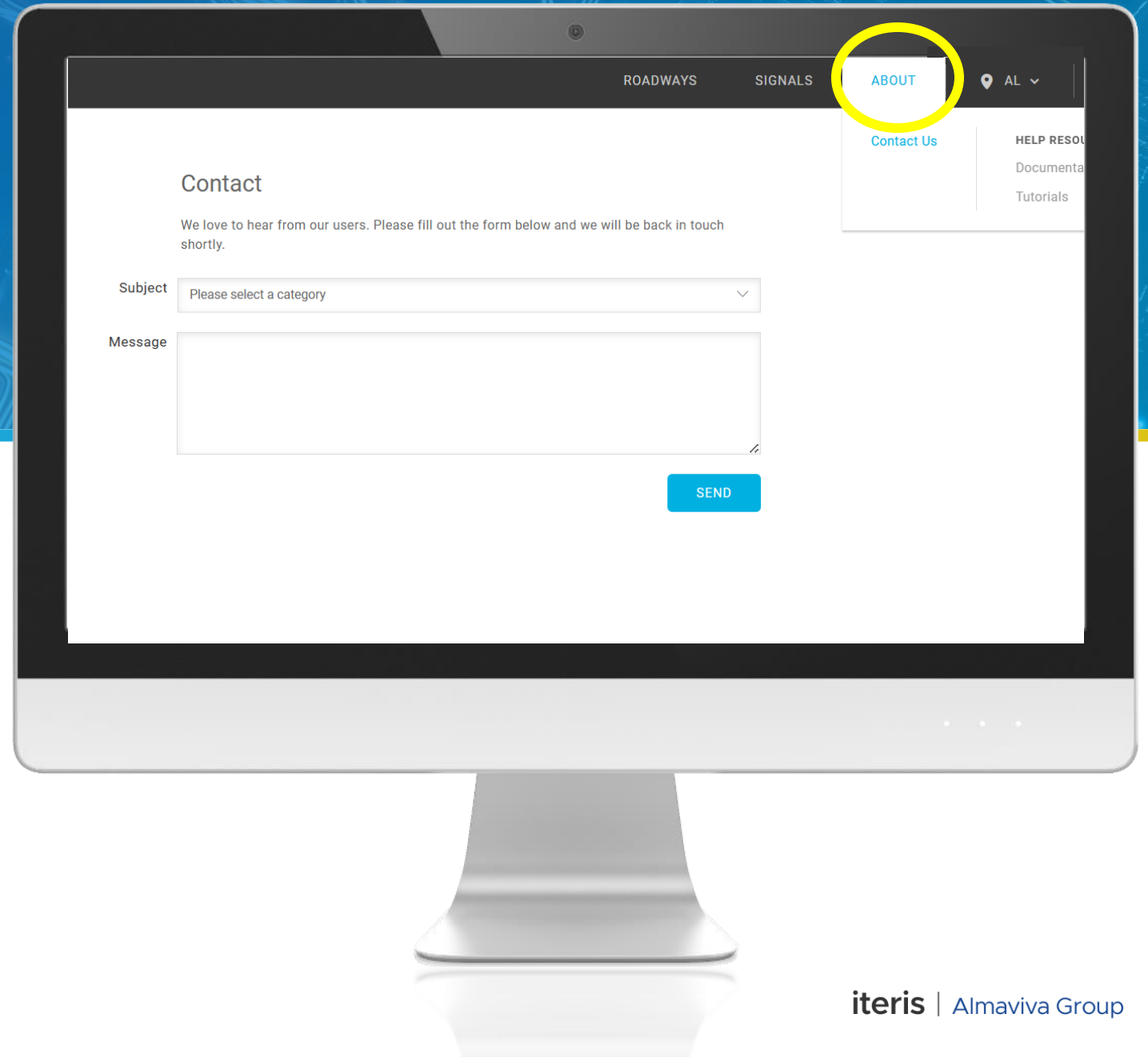
Getting access:

- Click on the link to access ClearGuide : <https://metro.iteris-clearguide.com/>
- The tab at the top of the screen are where you will find Roadways menu



Support:

- 'About' → 'Contact Us'
- Submit questions, bugs, suggestions, or other comments.



ClearGuide Users

Iteris reaches a broad range of users aiming to make roads safer and more efficient



Traffic Operators



**Transportation
Planners**

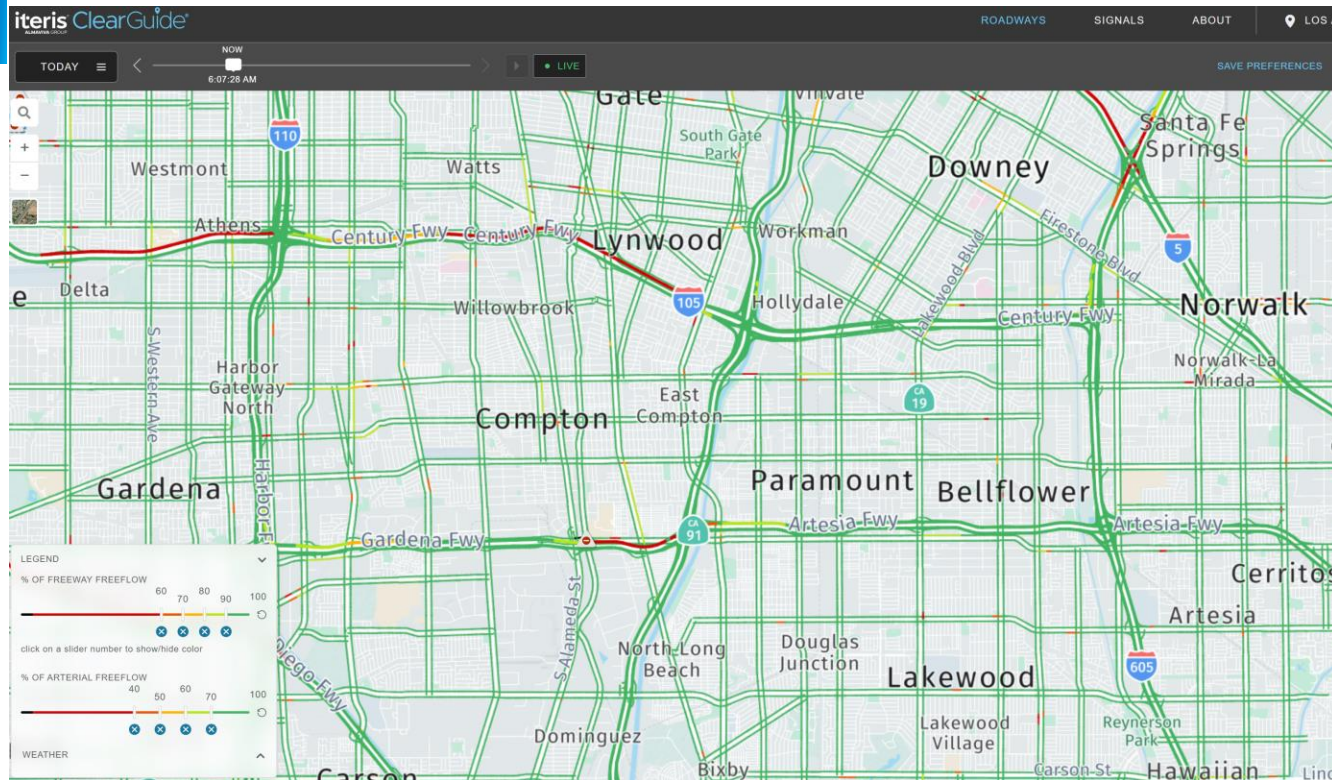


**Signal Timing
Engineers**



**Traffic Safety
Experts**

Roadways Training



Traffic congestion map and map layers



Creation of Routes



Run analysis

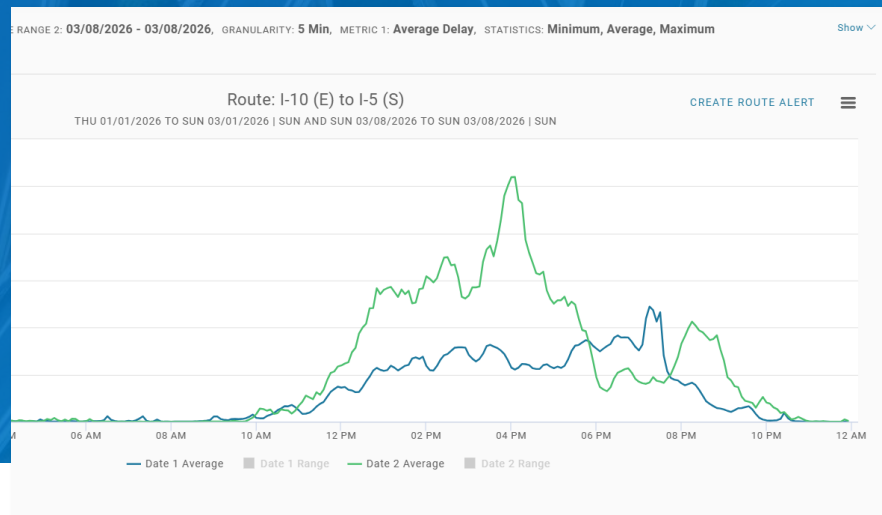
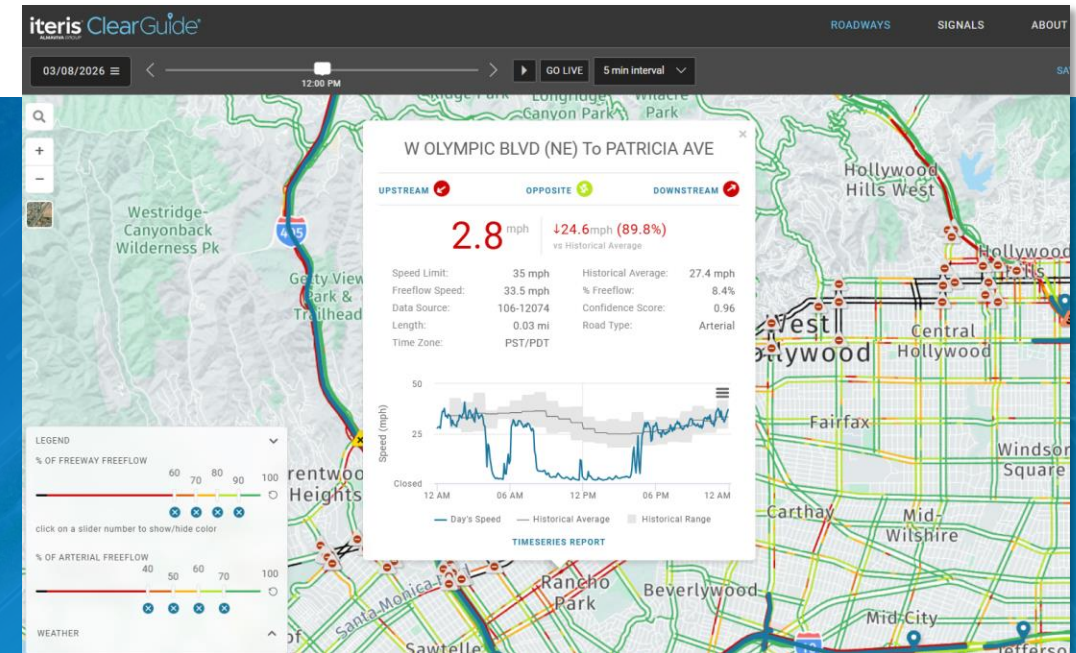


Before / after reports



Export results

LA Marathon



DATE RANGE: 01/01/2026 - 03/01/2026, DATE RANGE 2: 03/08/2026 - 03/08/2026, METRIC 1: Average Delay, METRIC 3: Average Delay

TIME OF DAY: All, INCLUDE DAYS: Sun

Route Name	ID	1/1/26-3/1/26	3/8/26-3/8/26	Diff	% Diff
I-10 (E) to I-5 (S)	5340	2.65	4.99	2.34	88.3%
I-5 (N) To EXIT: 131 to I-10 (W) From EXIT: 1C	5341	3.45	5.45	2	57.97%
S FAIRFAX AVE (SW) to SANTA MONICA BLVD (SW)	5343	3.42	2.3	-1.12	-32.75%
S FAIRFAX AVE (SW) to SANTA MONICA BLVD (W) From BUTLER AVE	5345	3.3	2.89	-0.41	-12.42%
SANTA MONICA BLVD (E) To BUTLER AVE to S FAIRFAX AVE (NE)	5344	3.17	3.46	0.29	9.15%
SANTA MONICA BLVD (NE) to S FAIRFAX AVE (NE)	5342	2.67	4.23	1.56	58.43%

World Cup: Sofi Stadium



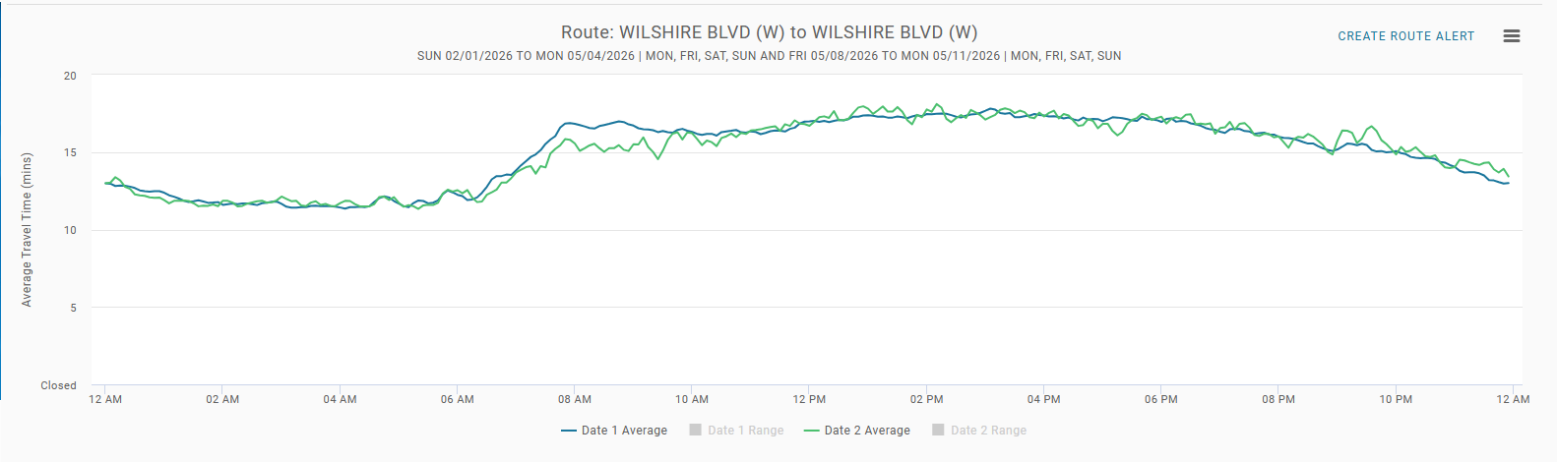
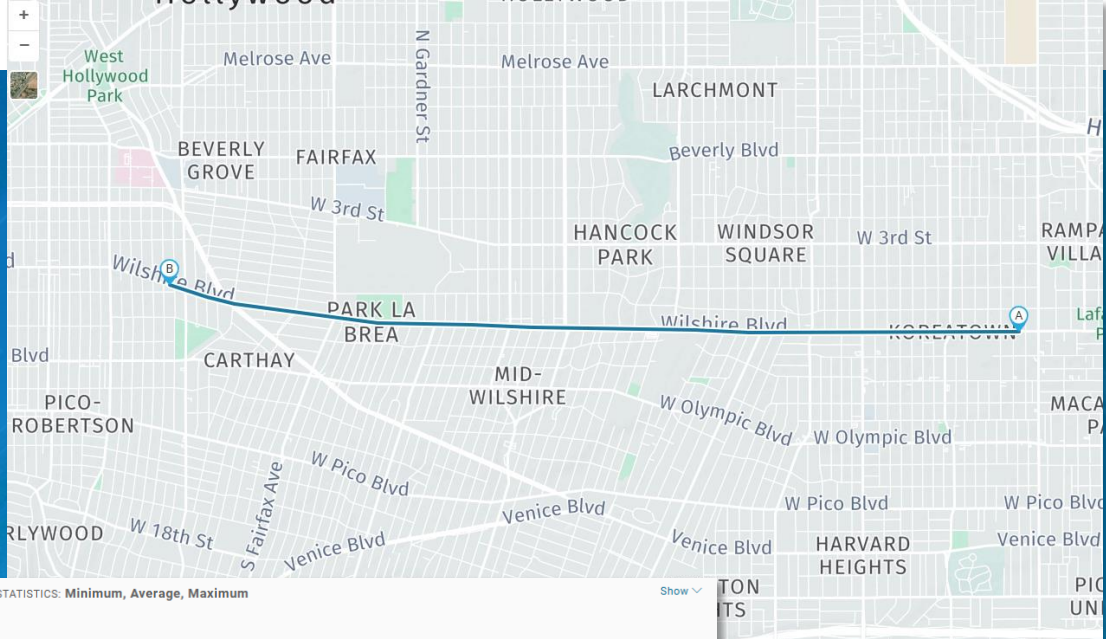
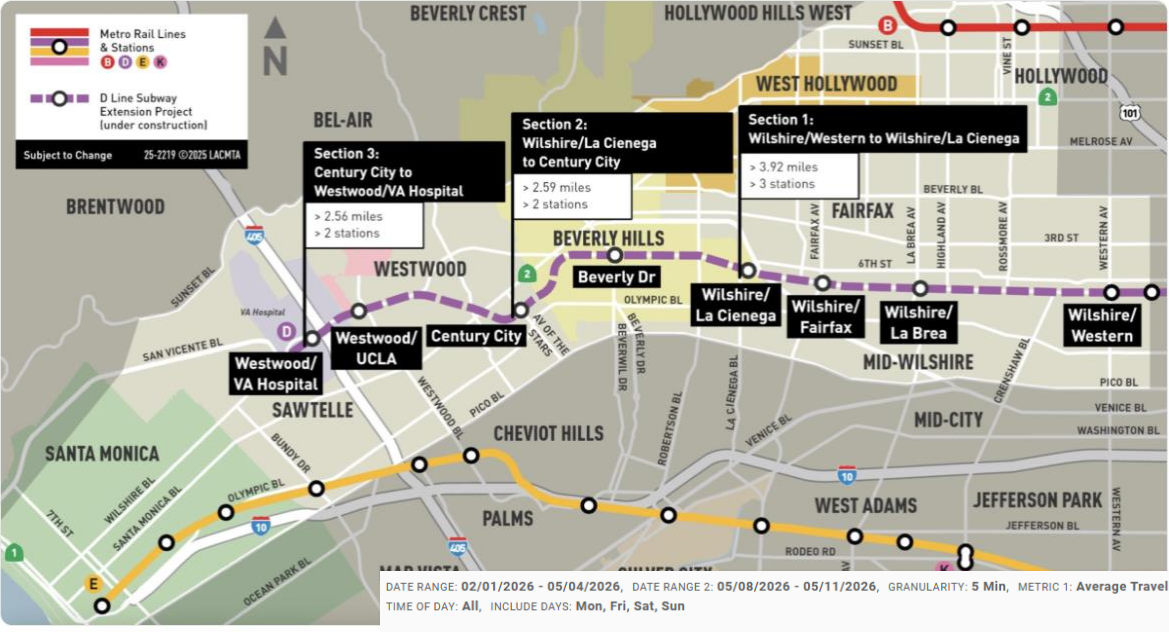
• World Cup Analysis

- Create and Monitor Event Specific Routes
 - Detours around Sofi Stadium
 - Creation of Route Alerts
- Bottleneck and Incident Hotspot Detection
- Rapid Reporting
 - Export data
 - Create and Share animation videos
- Regional Collaboration
- Creation of Multi-Route Reports
 - Performance
 - Time Comparison
 - Report Card

• World Cup Fan Zones

- Original Farmers Market
- Union Station
- City of Downey
- Hansen Dam Lake
- Venice Beach
- Fairplex
- West Harbor
- Downtown Burbank
- Ervin "Magic" Johnson Park
- Whittier Narrows

D Line Extension





Metro

Shrota Sharma Whittemore
Transportation Planning Engineer
sharmas@metro.net

Elijah Davis
Transportation Associate
davisel@metro.net



Iteris

Megan McElwee
Solutions Engineer
mrosica@iteris.com

Drew Hart
Sr. Solutions Architect
ahart@iteris.com

