

CONNECT-IT

Connect and Integrate Transportation Technology

OCTOBER 2024 NEWSLETTER

This is the second installment in a quarterly series of newsletters from LA Metro to share information about existing and upcoming ITS and transportation technology projects in Los Angeles County, analytical and asset management tools to support you in your work, and training opportunities.

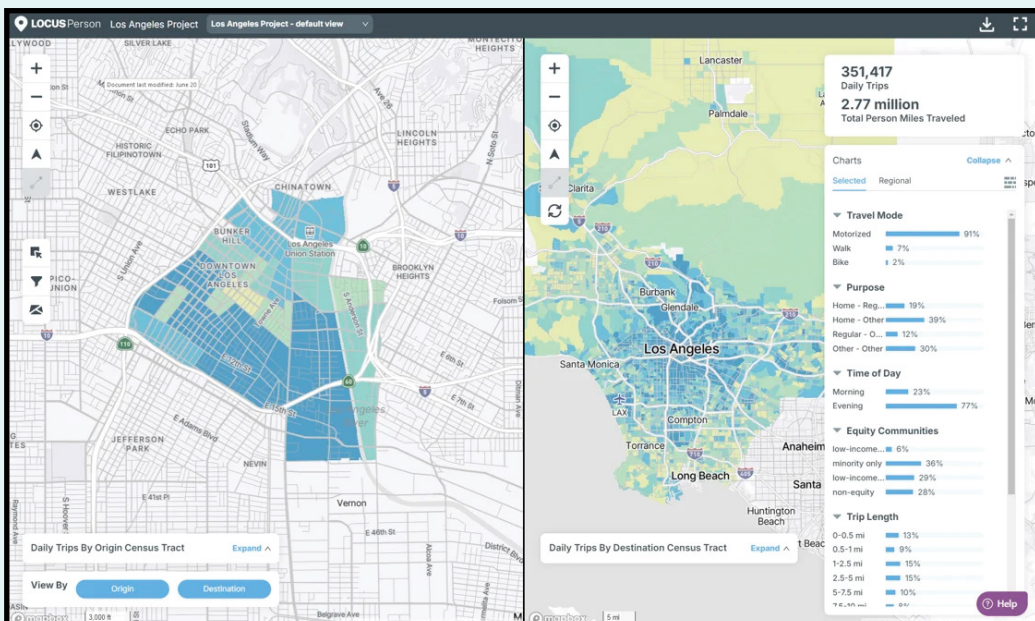
This quarter, we are spotlighting City of Palmdale's **North County ITS** project. This initiative involves installing a new fiber ring that will enhance connectivity across the city, adding eight miles of fiber that will connect five traffic signals to a new ring and a new traffic signal. The project includes rerouting existing cable on Avenue S into the new hub facilitating new communications circuit between Palmdale's Traffic Operations Center and existing traffic signals at Avenue S/ The Groves, and Avenue S/Parkwood Drive. Furthermore, this initiative will also provide splice points and slack in the cable for tie-in of future traffic signal locations. A contract was awarded in March 2024 with anticipated completion by April 2025.



For more information regarding this project, contact John Lee at jlee@cityofpalmdale.org

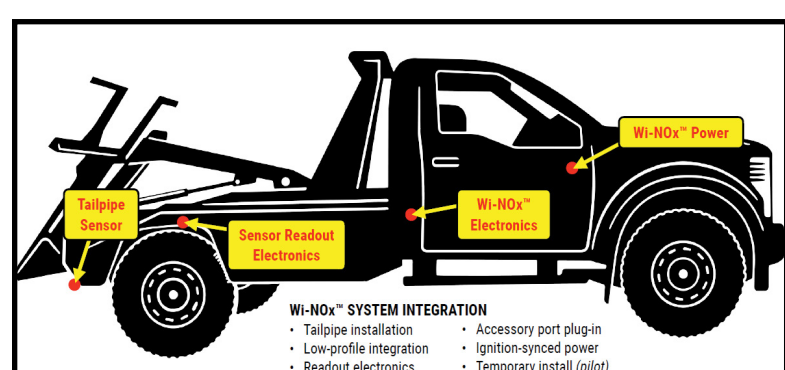
Introducing new **LOCUS UI!** Metro and LOCUS, Inc. are thrilled to announce the upcoming migration of **Measure Up! LOCUS** to a new web-based platform. The new LOCUS Platform features a range of innovative tools designed to enhance both user experience and functionality. Join the LOCUS Platform now! To get started, simply sign up using your organization's email using this [link](#) and upon signing up, an email with account instructions will be sent to you!

Looking ahead, we have several exciting updates planned for 2024, including the integration of 2024 data, transit data from Metro and regional partners, expanded light-duty truck information, and ongoing platform enhancements. Stay tuned for more updates, and we look forward to your involvement in the new LOCUS Platform!



Have any questions or suggestions on how we can improve? Contact Shrota Sharma at sharmas@metro.net or LOCUS Support at support@locusdata.io

Metro completed a pilot program with **IREPA International LLC** (IREPA), SensorComm Technologies, Inc. (SCT), and HNTB Corporation (HNTB) in which nitrogen oxide (NOx) emission sensors, or Wi-NOx, were equipped to Metro Freeway Service Patrol vehicles. The Wi-NOx system allowed for real-time reporting of emissions data. This technology supported efforts to understand the effects of nonrecurring congestion related to air quality.



Key Findings



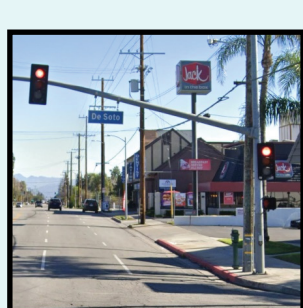
Emission monitoring of individual vehicles



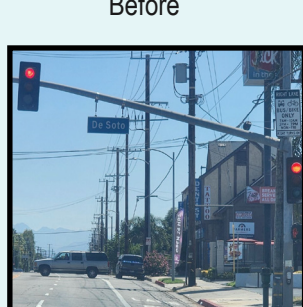
Ability to generate location-based pollution data



Ability to validate transition plan effectiveness for migration to new "clean diesel" vehicles



Before



After

The **North San Fernando Valley Bus Rapid Transit (NSFV BRT)** project is providing a high-capacity east-west transit service in the North San Fernando Valley, meeting the growing demand for transit in the Valley, and contributing to the success of the existing and planned Countywide transit system by adding connectivity to a large population and significant trip generators, including CSU Northridge, Panorama Mall, Northridge Fashion Center, and medical centers. Project elements include transit signal priority, electric buses with all-door boarding, enhanced stops with branding at key transfer locations, bus shelters, and peak-hour bus only lanes.

The Metro NextGen Roscoe Bl Bus Bike Lane project, for example, is bringing increased service frequency to the Valley at minimal cost by converting 11-center lane miles of curb lanes along Roscoe Bl to peak-hour bus priority lanes. Roadway striping and signage modifications are currently being installed from Topanga Canyon Bl to Cold Water Canyon Av. The construction is expected to be completed in 2nd quarter FY 2025.



For more information regarding this project, contact Conrad Viana at vianac@metro.net

Information Exchange Network (IEN) is reimagined and a new element of The **Regional Integration of Intelligent Transportation Systems (RIITS)**. RIITS along with the County of Los Angeles, Department of Public Works (LACPW) and Metro have agreed to merge the Information Exchange Network (IEN) center-to-center functions into RIITS. Technology, organizational restructuring and responsibility drove this change as Traffic Management Data Dictionary (TMDD) is being adopted regionally for center-to-center communications.

Center-to-center communications using TMDD through RIITS will continue to allow transportation champions to concentrate on their core responsibilities as experts in their fields while providing a means for coordination and collaboration. It is anticipated that this small change will have a significant impact on the ability of the region to manage transportation coordination through ICM corridors or CSP corridors where LACPW will continue to concentrate on their expertise in arterials and RIITS will expand its role in the regional implementation of transportation technology.



Call for Projects (Prop C), 710 MIP, Measure R, and Measure M grantees are required to submit Quarterly Reports by November 30th (Q1), February 28th (Q2), May 31st (Q3), and August 31st (Q4). **Join us for the next Arterial ITS Meeting on November 14th.** Interested in applying for Metro grants? Agencies can work with their designated COGs/subregions to submit project proposals. For any questions regarding your grants, contact the Metro Project Manager.

Contacts

- Eve Moir (moire@metro.net)
- Shrota Sharma (sharmas@metro.net)
- Linh Trinh (trinh@metro.net)
- Conrad Viana (vianac@metro.net)



Arterial ITS

Measure Up!

Integrated Corridor Management (ICM)

Bus Speed & Reliability

RIITS

Metro Grants